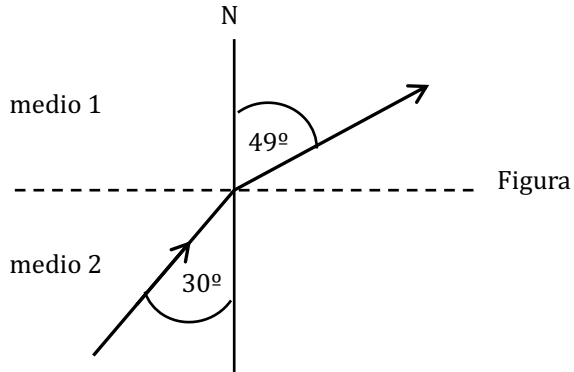


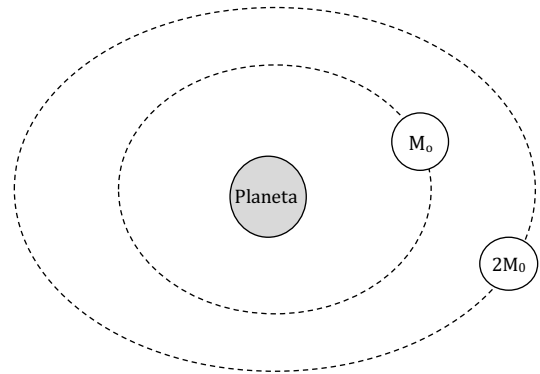
Fe de errata
PRIMERA JORNADA GENERAL DE ENSAYOS TESLA

En el **módulo común**, en las preguntas 23, 24, 26 y 28 no se aprecian bien las figuras; las que se deben considerar son:

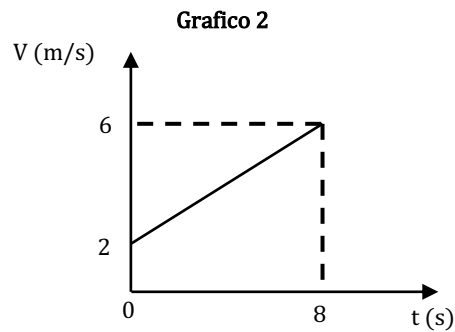
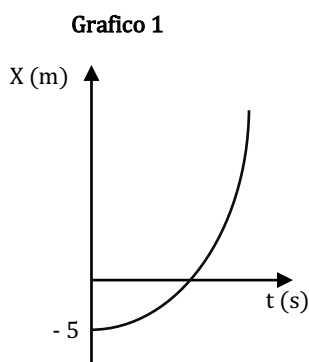
23.



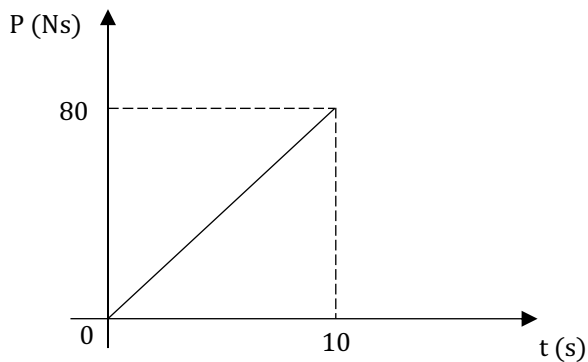
24.



26.

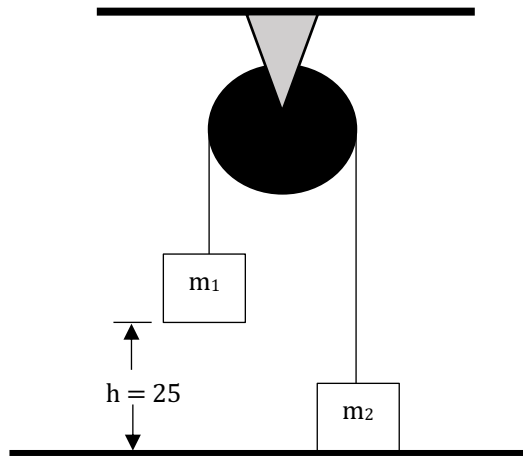


28.

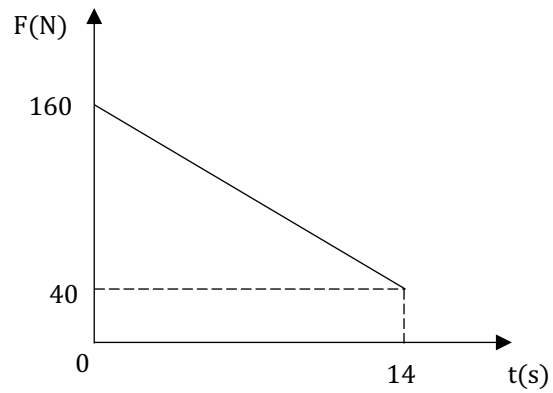


En el **módulo mención** no se aprecian bien las figuras de las preguntas 62, 64, 66, 67, 68, 78, 79, 80. Las que se deben considerar son:

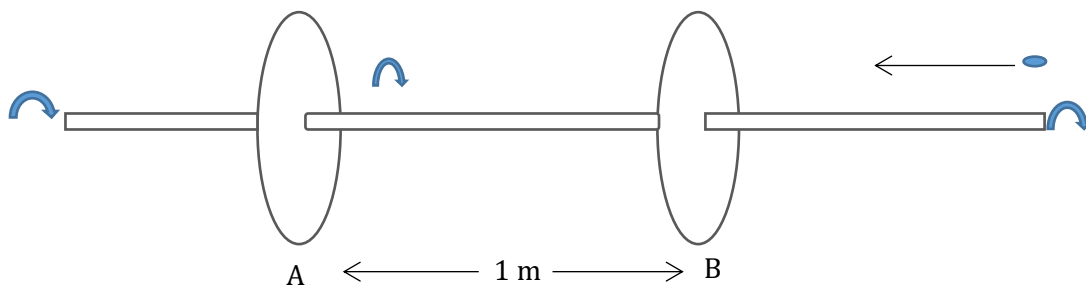
62.



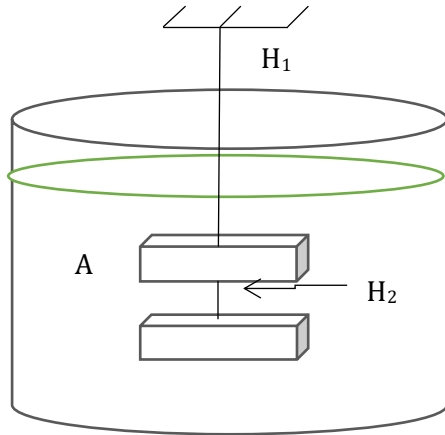
64.



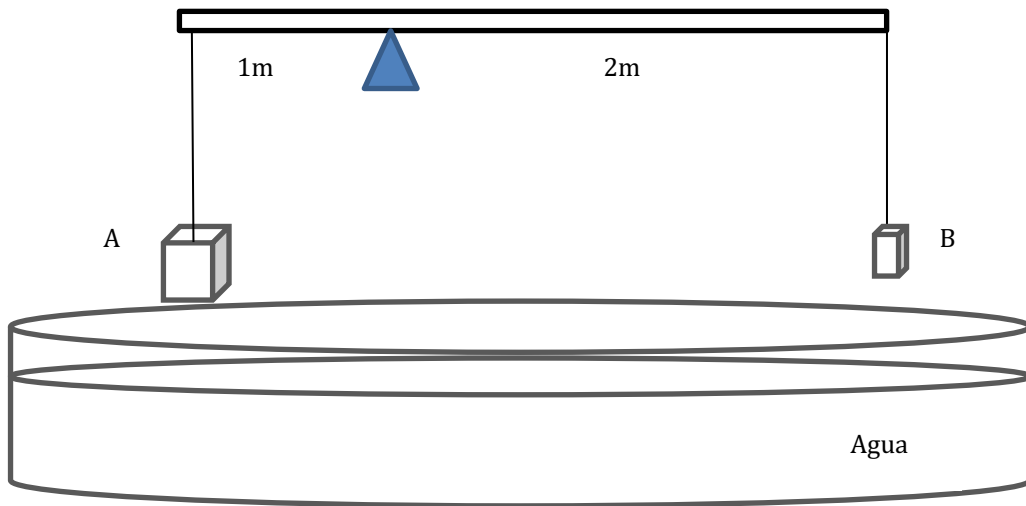
66.



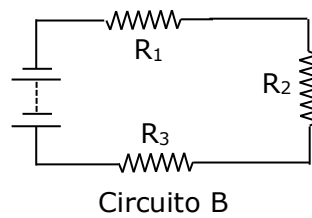
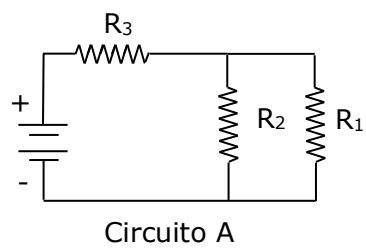
67.



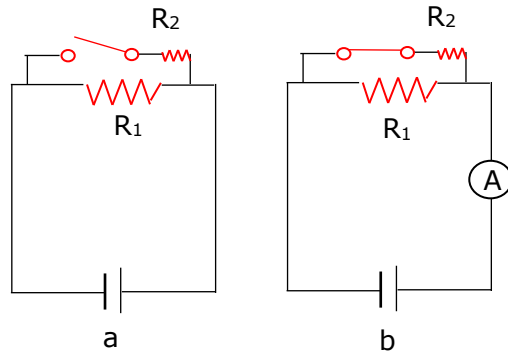
68.



78.



79.



80.

